

Notice to Mariners

Scottish Hydro Electric Power Distribution (SHEPD)

Pentland Firth East (3) Engineering Survey

Date of Issue: 26th April 2023

Notice to Mariners

This notice supercedes and updates that issued on 28th February 2023

Please be advised that Rovco Ltd. (on behalf of Jan De Nul Luxembourg S.A.) shall be undertaking a Route Engineering Survey for the Pentland Firth East (3) project. The project will install a subsea power cable between Caithness at Murkle Bay to Rackwick Bay at Hoy. This Notice to Mariners relates only to route survey activities. Power cable installation activities will be covered in subsequent NtMs.

Survey activities are ongoing along the cable route corridor shown in **Figure 1**. Updated survey duration information is provided in **Table 2**.

The working area that will be required for the duration of the Engineering survey is defined as a corridor $\pm 200\text{m}$ (\pm meaning "either side") around the preliminary cable route centre line.

Table 1 lists the approximate preliminary Route Position coordinates of the centre line.

LEGAL NOTICE

Please be advised that this Notice to Mariners should be treated as official notice of the nature, duration and location of the works which are scheduled to take place. During the period of this notice, we request that you plan your activities around our short-term, temporary activities.

Any failure to remove equipment or entry into the identified location in a manner that would constitute a hazard may be a breach of your duties of safe seamanship as described in the Convention on International Regulations for Preventing Collisions at Sea 1972 and/or the Merchant Shipping Act 1995, and may result in removal of the relevant equipment. Failure to remove equipment or entry into the identified location in a manner that would constitute a hazard may constitute a breach of duty of care at common law, and a failure to protect submarine cables for successful seabed user co-existence under Scotland's National Marine Plan.

SHEPD shall found on this notice in the event of any damage, loss or disruption arising from failure to heed the information herein.

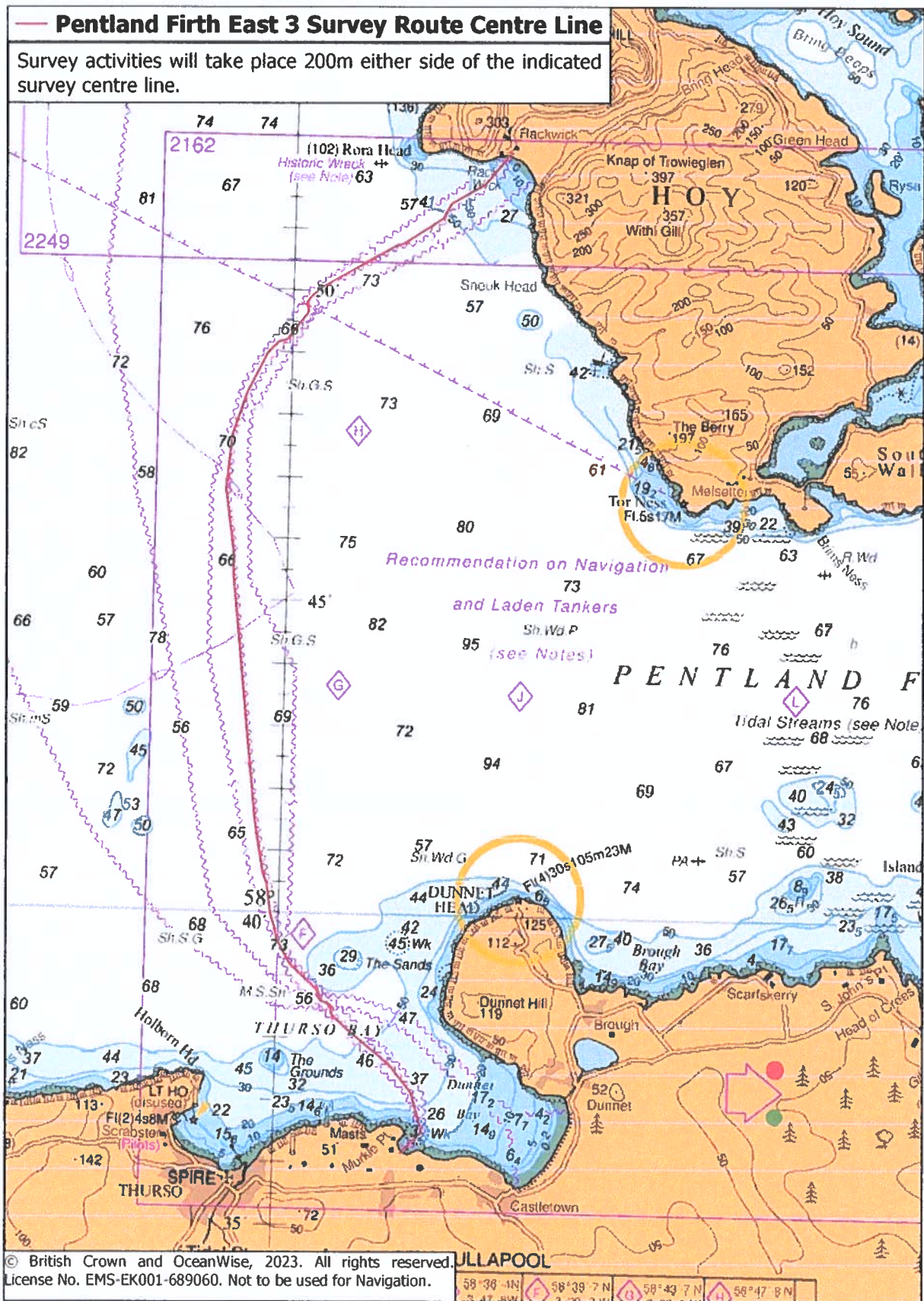


Figure 1: Survey Route Overview

Schedule of Operations

A summary of the Schedule of Operations for the survey activity is shown below in **Table 2**.

Table 2: Schedule of Operations

Dates	Vessel Scope	Vessel(s)
26 April 2023 – 14 May 2023	Engineering Survey	Glomar Supporter + Northerly Explorer (+ USV Muick-28 if needed)


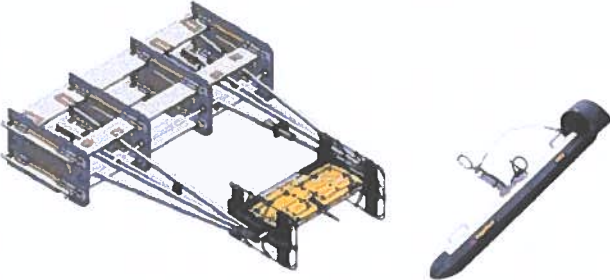
Vessel and Equipment Details

The vessels that are currently planned to carry out the marine survey activities are listed in **Table 3** below.

Table 3: Vessel Details

Vessel Photo	Vessel Description
	Glomar Supporter LOA: 60 m, Breadth: 15.6 m, Draft: 6 m Call Sign: HOAL IMO No: 9394301 MMSI No: 374689000 Mobilized with Seaeye Leopard ROV
	Northerly Explorer LOA: 12.5 m, Breadth: 4.88 m, Draft: 1.2 m Call Sign: 2GLF8 MMSI No: 235098358
	Muick-28 USV LOA: 2.8 m, Breadth: 1.2 m, Draft: 0.3 m Call Sign: N/A MMSI No: N/A (Deployed from shore)

Table 4: Equipment Details

Equipment Photo	Equipment Description
	<p>Seaeye Leopard Remotely Operated Vehicle will be utilized.</p> <p>Length: 2.15 m Width: 1.20 m Height: 1.16 m Weight in Air: 1.2 Te</p>
	<p>Eiva Scanfish Remotely Operated Towed Vehicle and Mag sensors + Edgetech 4205 towed SSS ➔ Will be deployed near seabed</p> <p>(for ROTV) Length: 4.33 m Width: 2.73 m Height: 2.77 m Weight in Air: 1.5 Te +payload</p>

Works Description

The primary objectives of the Engineering works are to:

- Prepare, verify the cable installation route
- Prepare crossings of in-service utilities and determine crossing locations
- Ensure clearance ahead of the installation and burial operations

The Engineering Survey campaign will encompass

- Inshore and offshore geophysical survey along the entire preliminary cable route as defined in **Table 1** and covering a corridor of $\pm 200\text{m}$ (\pm equals "either side")
- UXO gradiometer/magnetometer survey in areas of high risk (not along the complete route as defined in **Table 1**), covering a corridor of $\pm 200\text{m}$ (\pm equals "either side") from the Route. For inshore and offshore survey this will be a towed arrangement.

Three vessels will be used for these Engineering Survey:

- Inshore vessel (Northerly Explorer) working from nearshore to approximately the 10m LAT contour, 12h or 24h survey operations.
- Offshore vessel (Glomar Supporter) working as from 10m LAT contour onward in 24h survey operations.
- USV (Muick 28) may be used in the shallowest nearshore parts with visual (remote) control over it.

Equipment calibration operations may take place out of the defined corridor and these areas will be chosen so as not to interfere with fishing/shipping activity.

Contact Details

The vessels contact details are given in the tables below:

Glomar Supporter	
MMSI	374689000
Call sign	HOAL
Offshore Contact	Mikhail Kravchenko
Email	bridge@glomarsupporter.com
Tel	+31626812049

Northerly Explorer	
MMSI	374689000
Call sign	2GLF8
Offshore Contact	Paul Philips
Email	info@northerlymarineservices.co.uk
Tel	+44 (0)782 545 9242

Muick 28 USV	
MMSI	N/A
Call sign	N/A
Offshore Contact	Matthew Tait
Email	Matthew.Tait@rovco.com
Tel	+44 (0)117 230 0001

Fishing Liaison Officers

Fishing liaison for the survey activities will be co-ordinated by Brown and May Marine (BMM). For any commercial fishery queries please contact the Company Fishing Liaison Officer (CFLO) Alex Winrow-Giffin (07760 160039/alex@brownmay.com). The local Fishing Industries Representatives (FIR) are James Bremner (07889 760299/ bremnj@aol.com) on the mainland and Chris Davidson in Orkney (07810 305100/cad17@hotmail.co.uk). The vessel master will issue regular broadcasts whilst construction and survey works are ongoing to ensure minimal disruption and that vessels maintain an appropriate and safe distance.

Distribution List

The Distribution List of the Notice to Mariners is as per the stakeholder list in the Fisheries Liaison and Management Action Plan (FLMAP).